

33 Whitelaw Road, Chorlton Green, Manchester, M21 9HG



JP&Brimelow
ESTATE AGENTS



5 3 3 D

VIDEO TOUR AVAILABLE A truly exceptional FIVE DOUBLE BEDROOM and bay fronted, period residence. Situated on a highly sought-after road in the heart of Chorlton Green and within walking distance to the famous Beech Road, well-known for its array of bustling local restaurants, bars and independent shops.

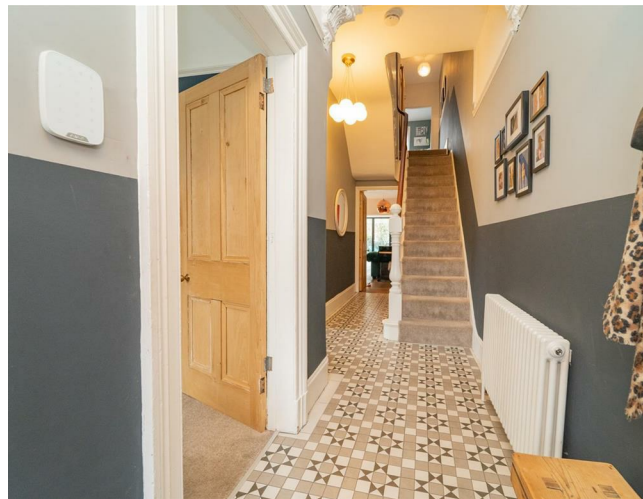
The thoughtfully-planned accommodation consists of a welcoming entrance hallway, a comfortable lounge featuring a front-facing bay window, and a morning room with stylish glass doors that open into an impressive open-plan modern kitchen, breakfast, and family space. This area includes a breakfast island, a bespoke panelled feature wall, a separate utility room, and a downstairs W.C. The dining area benefits from bi-fold doors that open out to the enclosed, landscaped garden.

The first floor offers three spacious double bedrooms along with a well-appointed four-piece family bathroom. Stairs rise to the second floor, which features two additional double bedrooms, ample storage space, and a modern three-piece ensuite shower room.

The property further showcases a wealth of character features, including elegant fireplaces, decorative ceiling coving, picture railings and impressive high ceilings, all complemented by gas-fired central heating for modern comfort.

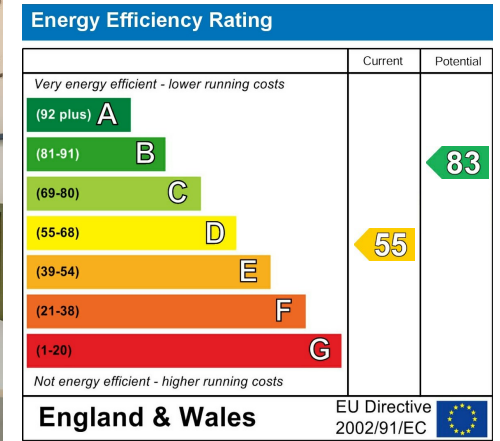
To the front, a gravel driveway provides ample off-road parking, while the rear boasts a beautifully landscaped, private lawned garden. Internal viewing is essential to appreciate the size and location of this stunning family home.

£950,000





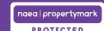
EPC Chart



Tenure: Freehold Council Tax Band: D



JP & Brimelow Estate Agents Ltd
 430 Barlow Moor Road, Manchester, M21 8AD
 Tel: 0161 8822233
 E: sales@jpbrimelow.co.uk www.jpandbrimelow.co.uk



JP & Brimelow
 ESTATE AGENTS

NOTICE: JP & Brimelow Estate Agents Ltd for themselves and for the vendors or lessors of this property whose agents they are give notice that:

- (i) the particulars are set out as a general outline only for the guidance of intending purchasers or lessees, and do not constitute, nor constitute part of, an offer or contract;
- (ii) all descriptions, dimensions, references to the condition and necessary permissions for use and occupation, and other details are given in good faith and are believed to be correct but any intending purchasers or tenants should not rely on them as statements or representations of fact but must satisfy themselves by inspection or otherwise as to the correctness of each of them;
- (iii) no person in the employment of JP & Brimelow Estate Agents Ltd has any authority to make or give any representation or warranty whatever in relation to this property.

jpandbrimelowstateagents

@jpandbrimelow

